

Ortal Carbon Monoxide Detector & Shut-Off Kit

Overview

The Ortal Carbon Monoxide (CO) Detector & Shut-Off Kit fully integrates the CO alarm into the fireplace's gas and electrical system. The system is designed to shut the fireplace off if carbon monoxide is detected in the room.

For New York City projects, this system complies with **NYC Fuel Gas Code 303.3.1** for direct vent fireplaces installed in a bedroom.

System Function: CO Detection

When the CO Alarm is alerted to the presence of carbon monoxide, the RM4 Relay will open and close the flow of power to the fireplace electrical system, forcing the fireplace to shut off.

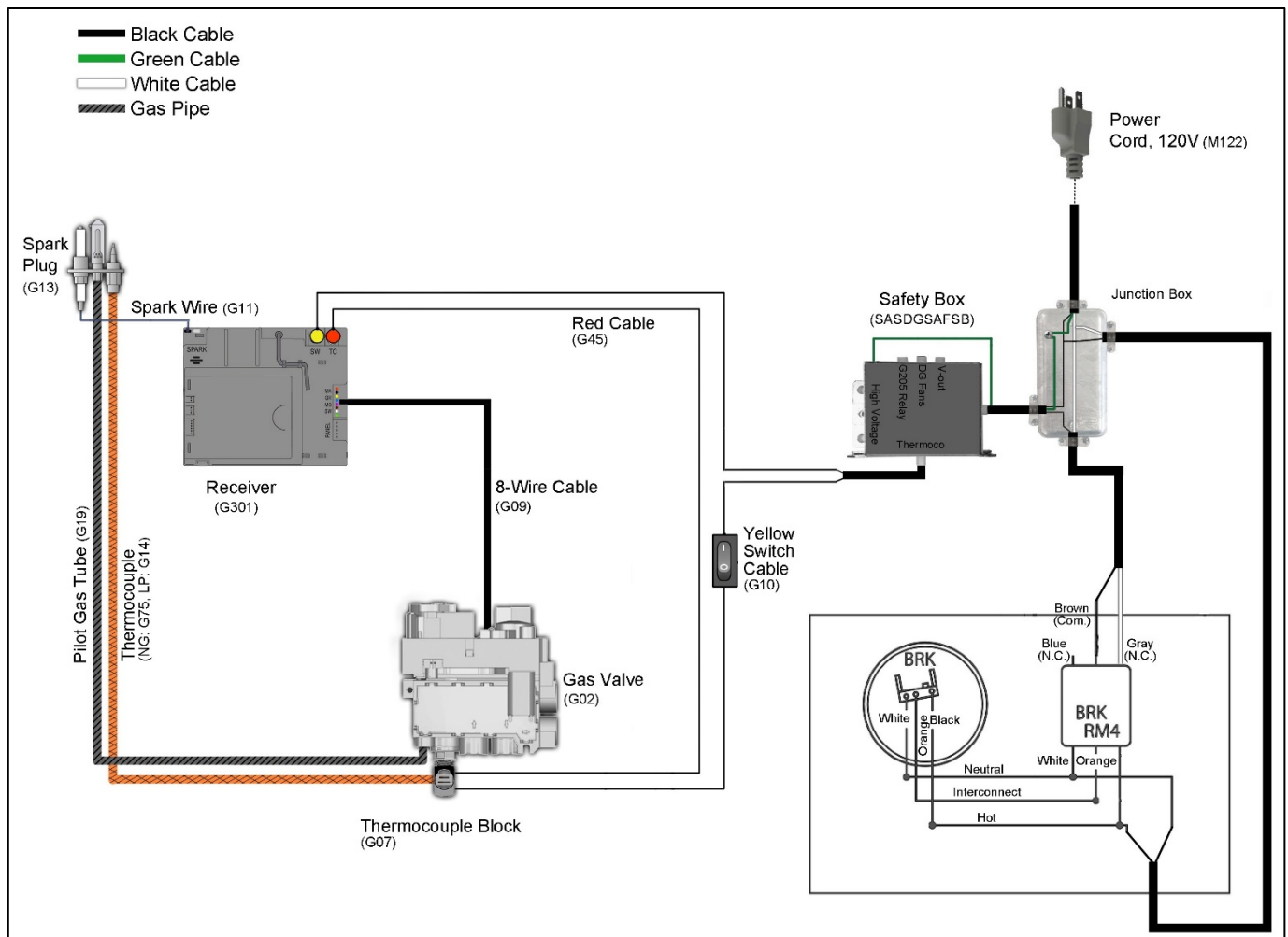
Installation

1. Install the CO detector in the room per code.
2. Connect the CO detector and RM4 relay per the manufacturer instructions.
3. Connect the 3 provided wires per the applicable wiring diagram below.

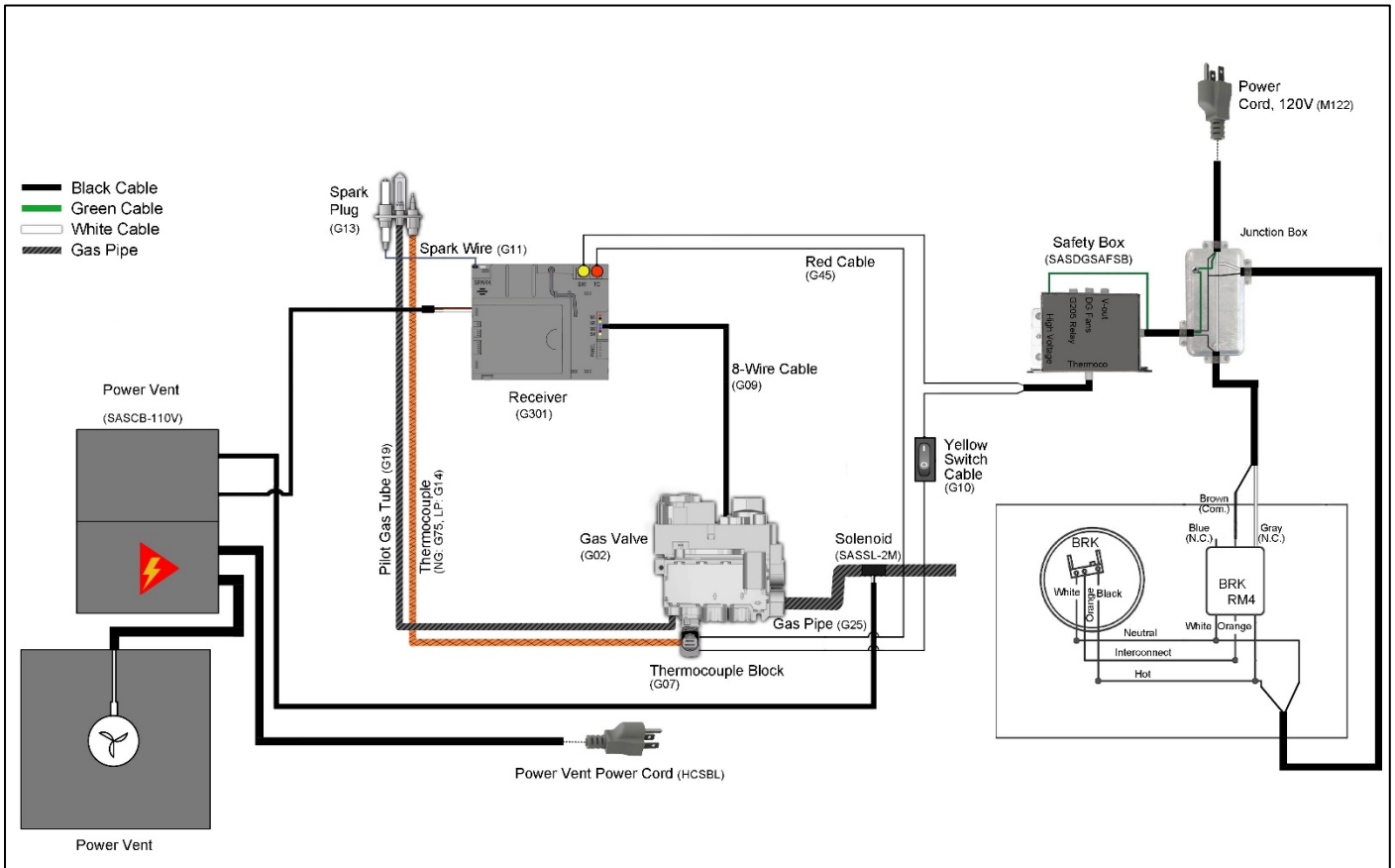
Wiring Diagrams

The following diagrams show how the CO Detector & Shutoff Kit wires into the fireplace components. The diagrams vary depending on the fireplace heat barrier and vent type.

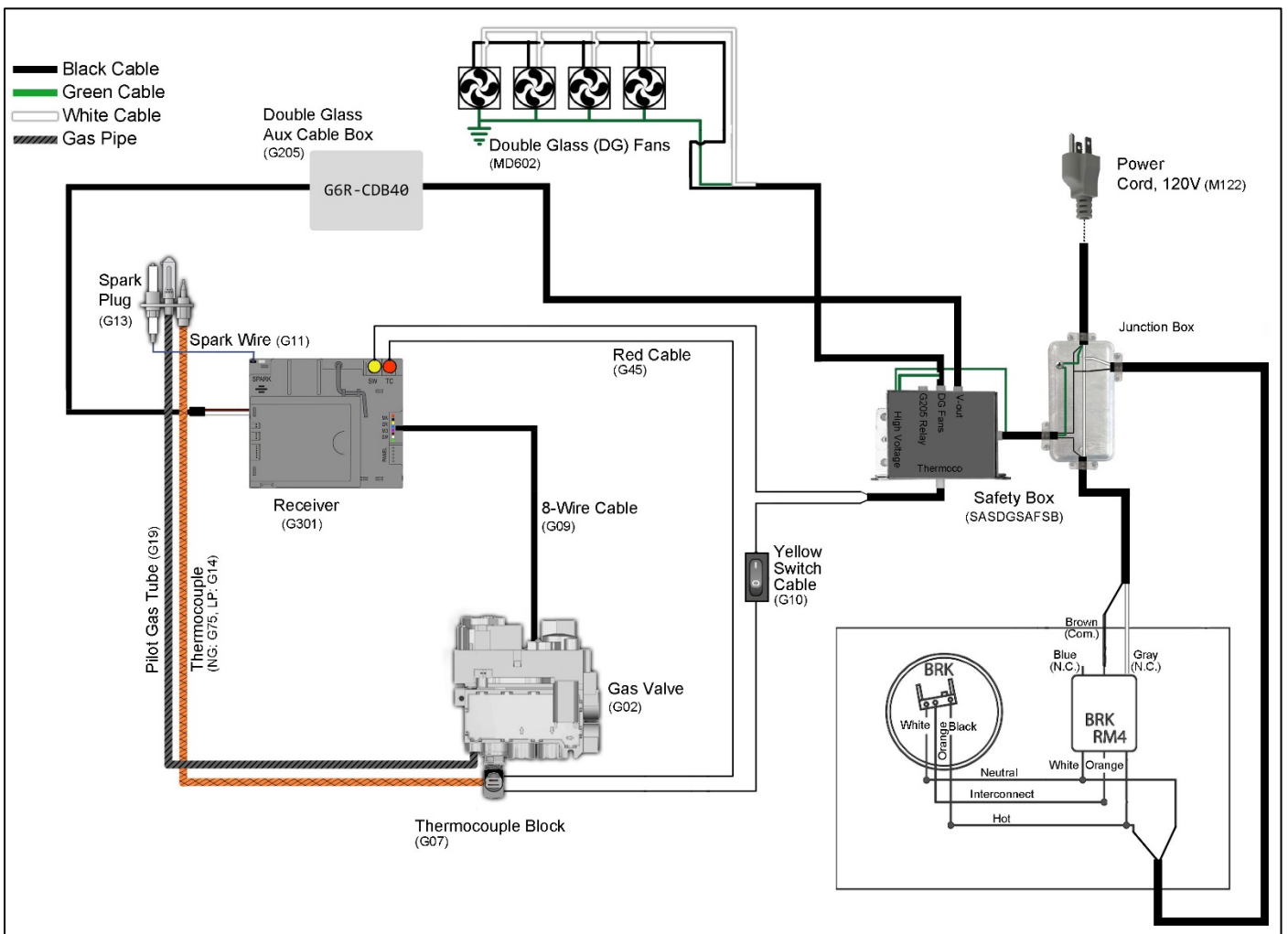
Screen Heat Barrier



Screen Heat Barrier with Ortal Power Vent



Double Glass Heat Barrier



Double Glass Heat Barrier with Ortal Power Vent

